



OLI®



Micro MVE

ELECTRIC EXTERNAL MOTOVIBRATORS



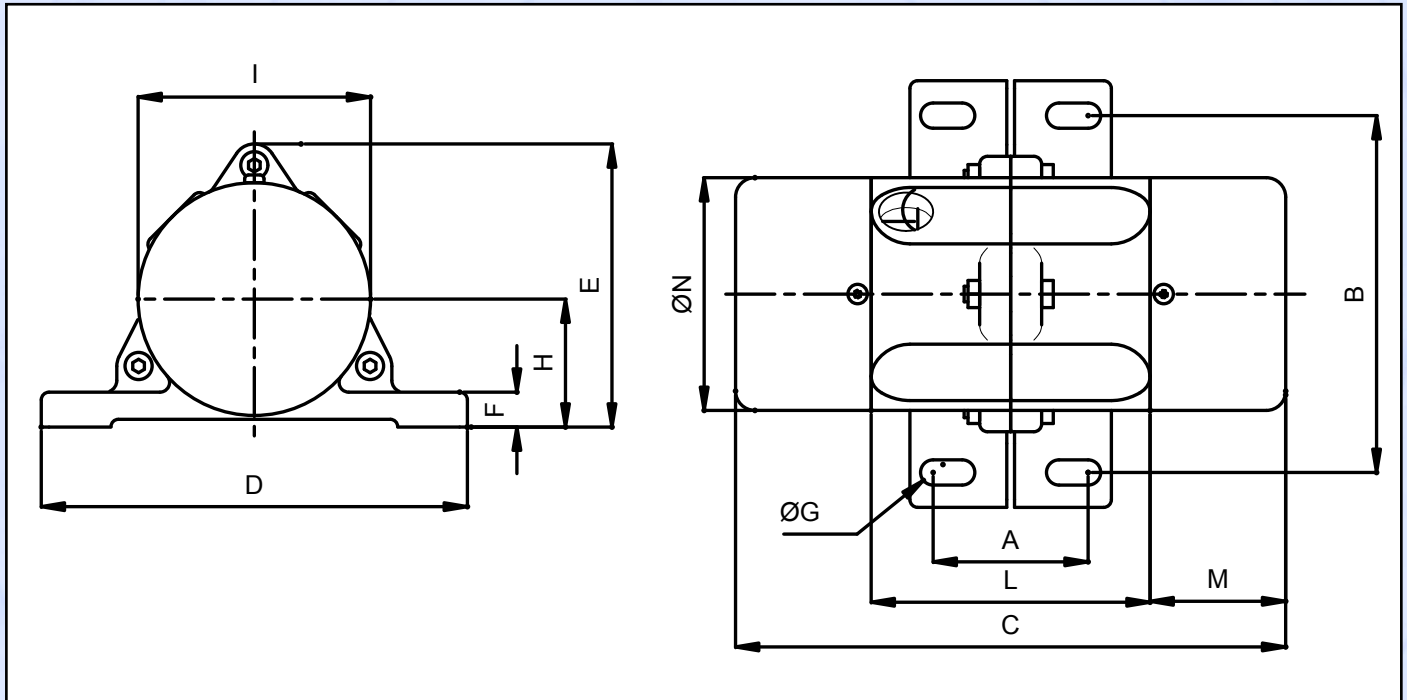
Micro - MVE

The Micro MVE series has been designed for continuous use in industrial processes. Mechanical protection IP 65. No maintenance: Long Life maintenance-free type bearing are used.

Applications: conveying, feeding, separating and compacting in the automation process in the food, packaging, pharmaceutical and chemical industries.

TECHNICAL CHARACTERISTIC

Type	Working moment		Centrifugal force		Power		Max current				Screw	Weight Kg
	Kgcm		Kg		Kw		1ph		3ph			
							230V	115V	400V	460V		
	50Hz	60Hz	50Hz	60Hz	50Hz	60Hz	50Hz	60Hz	50Hz	60Hz		
MVE 4 M	0,12	0,12	5	6	0,02	0,02	0,30 A	0,60 A			M5	1,4
MVE 20 M	0,39	0,39	22	32	0,03	0,04	0,10 A	0,23 A			M5	1,5
MVE 40 M	0,78	0,55	40	40	0,07	0,07	0,40 A	0,80 A			M5	1,7
MVE 20	0,39	0,39	22	32	0,03	0,04			0,10 A	0,12 A	M5	1,5
MVE 40	0,78	0,55	40	40	0,07	0,07			0,25 A	0,25 A	M5	1,7



Type	a	b	c	d	e	f	Ø g	h	i	l	m	n	Holes
	mm	mm	mm	mm	mm	mm	mm	mm	mm	mm	mm	mm	n°
MVE 4 M	25-40	92	142	110	73	9	6,5	33	60	72	35	60	4
MVE 20 M	25-41	92	142	110	73	9	6,5	33	60	72	35	60	4
MVE 40 M	25-44	92	162	110	73	9	6,5	33	60	72	45	60	4
MVE 20	25-42	92	142	110	73	9	6,5	33	60	72	35	60	4
MVE 40	25-43	92	162	110	73	9	6,5	33	60	72	45	60	4

